



Candidate Barcode Label

National Senior Certificate (Grade 12) – November 2025 **Confidential****CENTRE NUMBER****EXAMINATION NUMBER**DATE _____BOOK NUMBER

OF

BOOKS

SUBJECT CODE

M	L	I	T
---	---	---	---

PAPER NUMBER2

SUBJECT NAME

MATHEMATICAL LITERACY

[illegible]

CONTROLLED AND CERTIFIED CORRECT
(SURNAME AND INITIALS OF EA)

READ INSTRUCTIONS ON THE NEXT PAGE.

This answer book consists of 17 pages.

Copyright reserved

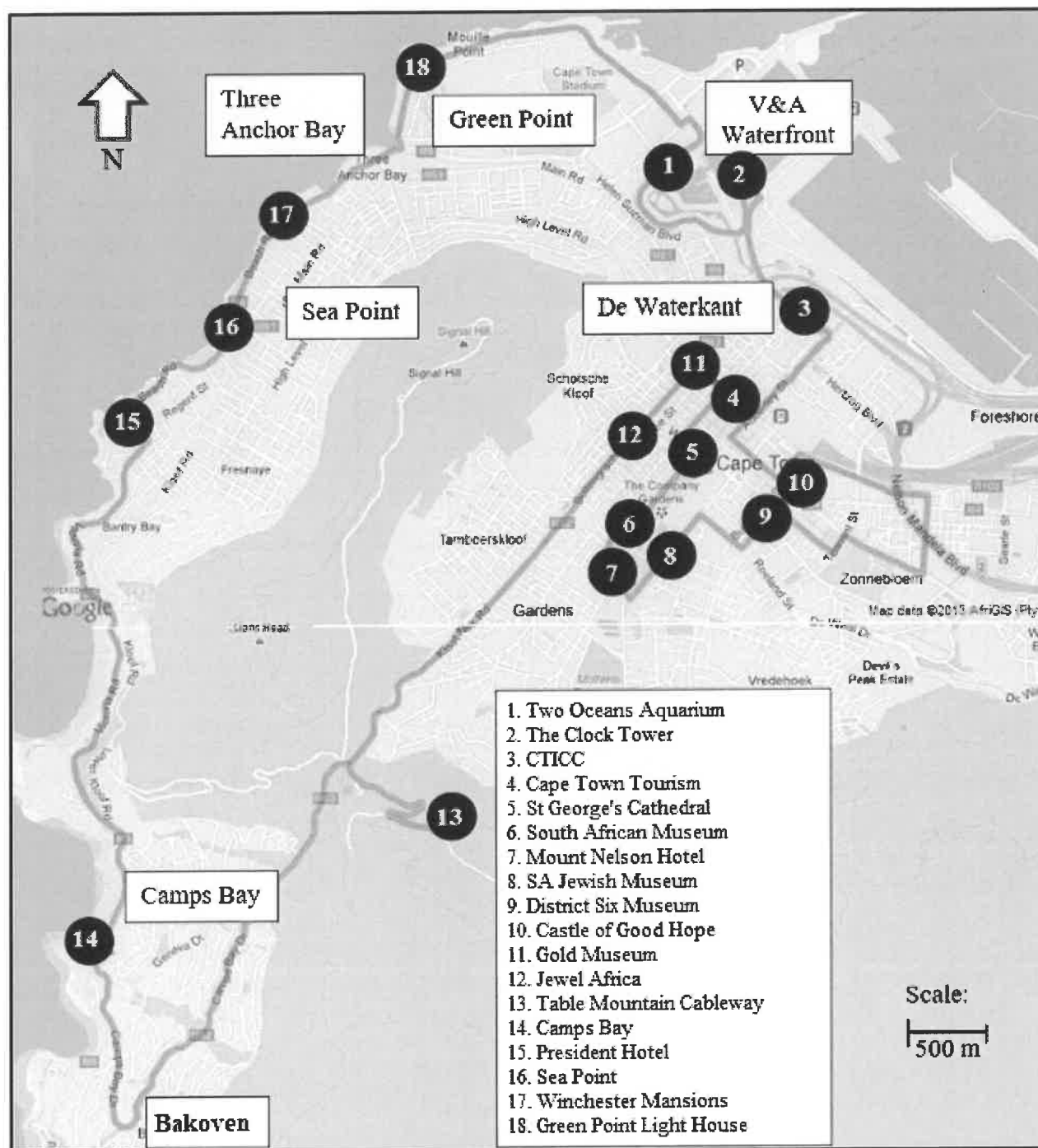
Please turn over

FOLLOW THESE INSTRUCTIONS CAREFULLY.

1. Clearly write your examination number and centre number in the spaces provided and attach your barcode label in the space provided.
2. Remember that your own name (or the name of your school) may not appear anywhere on this ANSWER BOOK.
3. Answer ALL the questions in the spaces provided in this ANSWER BOOK ONLY. If you require additional space for your answers:
 - 3.1 Use the additional space provided at the end of the ANSWER BOOK.
 - 3.2 When answering a question in the additional space, indicate clearly the question number in the column on the left-hand side.
4. No pages may be torn from this ANSWER BOOK.
5. Candidates may not retain the ANSWER BOOK or remove it from the examination room.
6. Answers must be written in black/blue ink as distinctly as possible.
7. Do not write in the margins.
8. Draw a neat line through any work/rough work that must NOT be marked.

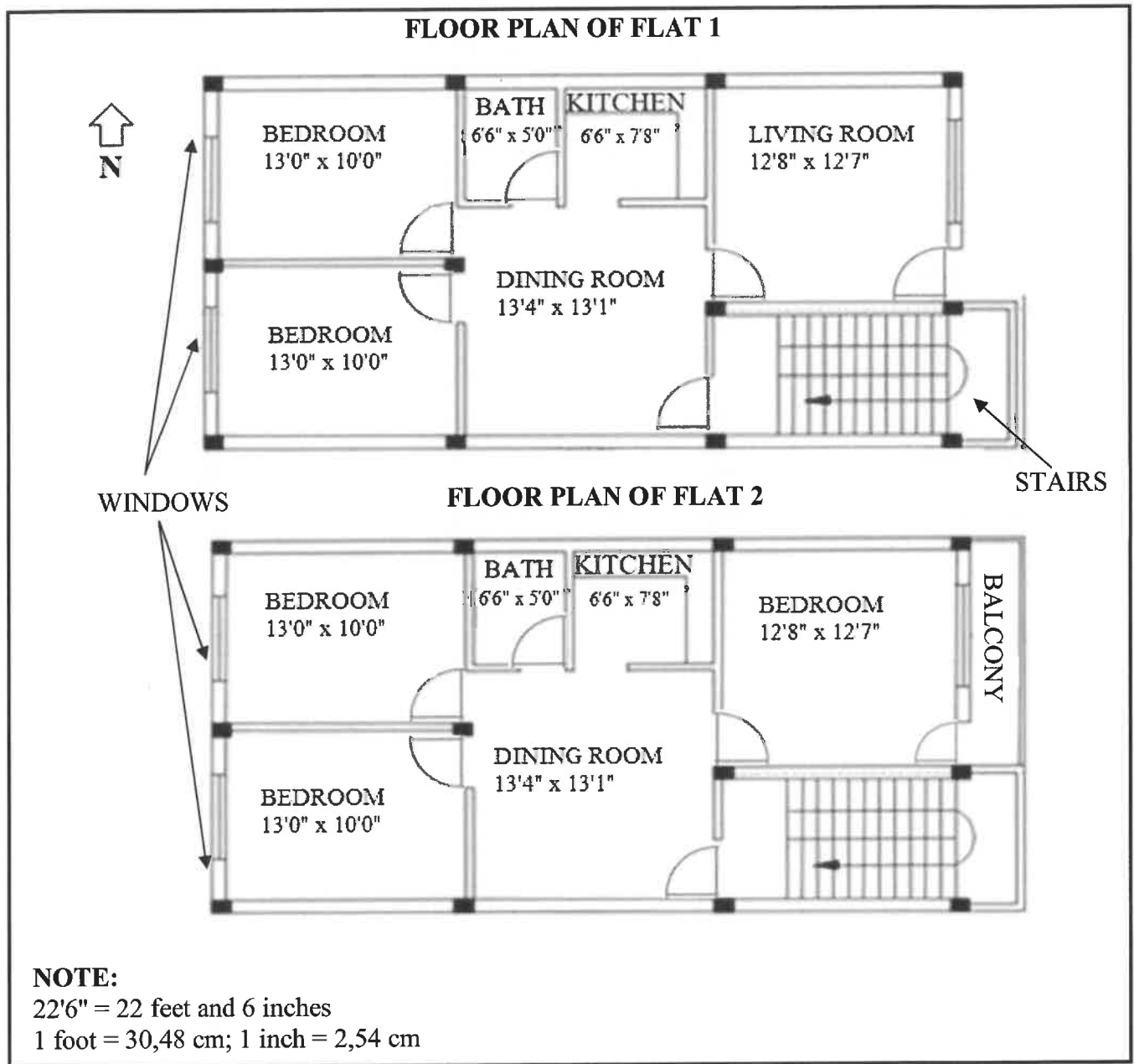
QUESTION 1.

	Solution	Marks
1.1.1		(2)
1.1.2		(2)
1.1.3		(2)
1.1.4		(2)
1.1.5		(2)
1.2.1		(2)
1.2.2		(2)
1.2.3		(2)
1.2.4		(2)
1.3.1	(a)	(6)
	(b)	
	(c)	
	(d)	
	(e)	
	(f)	
1.3.2		(2)
1.3.3		(2)
		[28]

QUESTION 2**ANNEXURE A****ROUTE MAP OF A ROUND TRIP AND THE 18 STOPS MADE BY THE TOUR BUS**

[Adapted from www.africanamericangolfersdigest.com/cape-town-hop-on-hop-off-red-line-bus-route]

	Solution	Marks
2.1.1		(2)
2.1.2		(2)
2.1.3	(a)	(4)
	(b)	
	(c)	
	(d)	
2.2.1		(2)
2.2.2		(2)
2.2.3		(2)
2.2.4		(5)

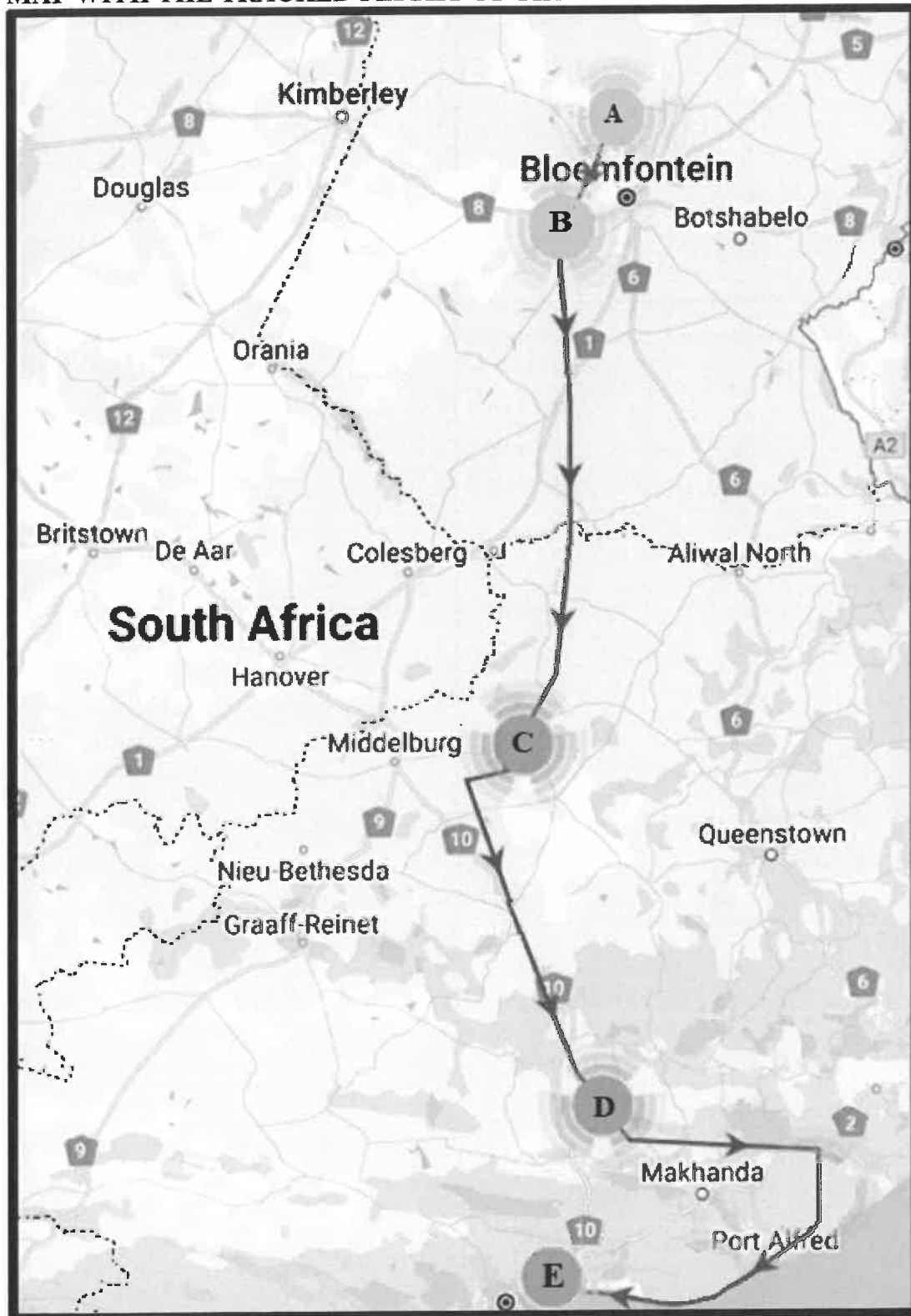
ANNEXURE B**PLAN OF A GROUND-FLOOR FLAT AND A FIRST-FLOOR FLAT**[Adapted from cadbull.com]

	Solution	Marks
2.3.1		(2)
2.3.2		(5)
2.3.3		(4)
2.3.4		(2)
2.3.5		(2)
		[34]

QUESTION 3

	Solution	Marks
3.1.1		(2)
3.1.2		(3)
3.1.3		(4)
3.1.4		(5)
3.1.5		(4)

	Solution	Marks
3.2.1		(2)
3.2.2		(3)
3.2.3		(9)
		[32]

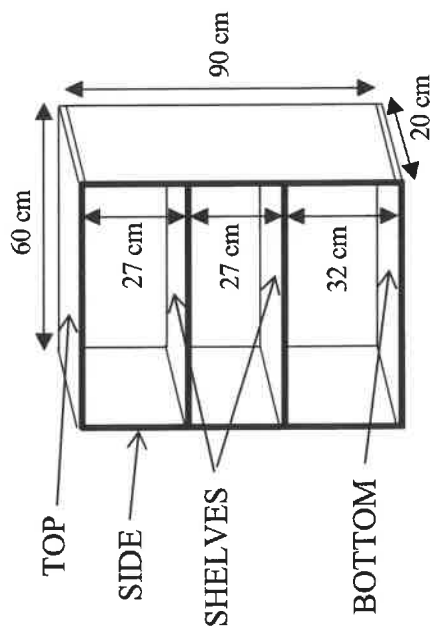
QUESTION 4**ANNEXURE C****MAP WITH THE TRACKED FLIGHT OF THE FLAMINGO**

[Adapted from www.news24.com/news24/community-newspaper/noordkaapbulletin]

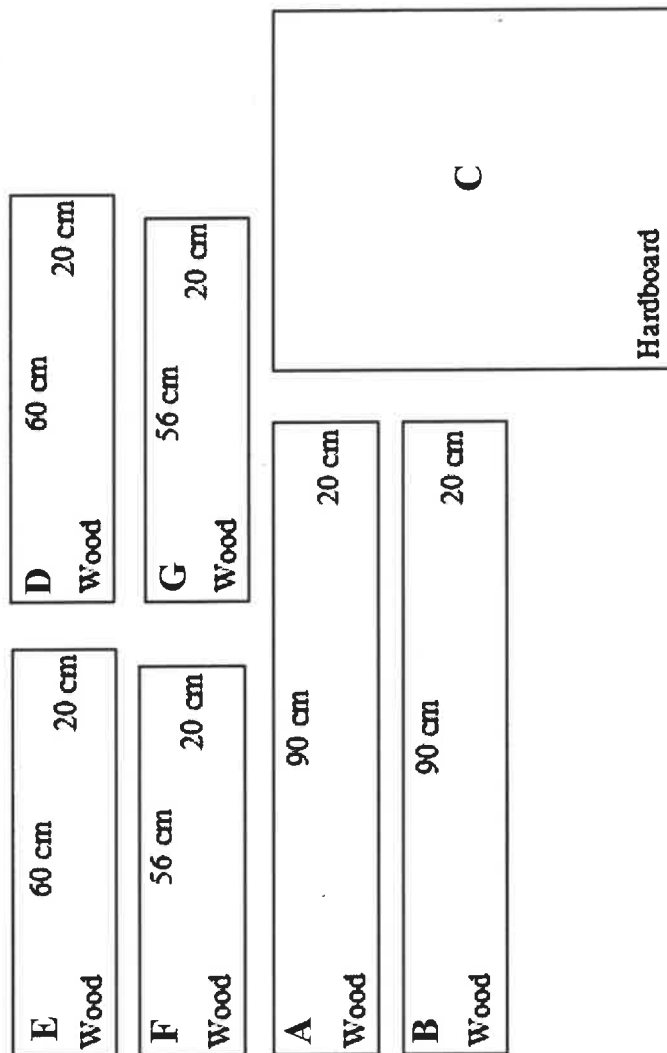
	Solution	Marks
4.1.1		(2)
4.1.2(a)		(2)
4.1.2(b)		(3)
4.1.3		(2)
4.2.1		(2)
4.2.2		(3)
4.2.3		(2)
4.2.4		(4)

	Solution	Marks
4.2.5		(5)
4.2.6		(5)
		[30]

KEEP THIS PAGE BLANK.

QUESTION 5**ANNEXURE D****DIAGRAM 1: TOP, BOTTOM, SIDES AND SHELVES OF BOOKCASE AND HARDBOARD FOR THE BACK****NOTE:**

- The back of this bookcase is made of a thin hardboard.
- The top and bottom pieces of wood extend right across the bookcase.
- The shelves are fitted in between the side pieces, so they are slightly shorter than the top and bottom pieces.

DIAGRAM 2: HARDBOARD AND SIX PIECES OF WOOD TO ASSEMBLE A SINGLE BOOKCASE[Source: www.timbercity.co.za]

	Solution	Marks
5.1.1(a)		(2)
5.1.1(b)		(2)
5.1.2		(2)
5.1.3(a)		(2)
5.1.3(b)		(6)

	Solution	Marks
5.2		(6)
5.3		(6)
		[26]

	Additional space	Marks

RE-MARK/RE-CHECK				
Question	Marks			Initials
1				
2				
3				
4				
5				
TOTAL				
HASH TOTAL				